


Wellbeing Solutions





Focus on your well-being and earn rewards up to \$700

The more activities you complete, the greater your reward

The Wellbeing Solutions program connects you with easy-to-use digital health and wellness tools that can help you stay your best. When you complete any of the activities listed below sponsored by your employer, you'll earn rewards to put toward Mastercard gift cards for health-related purchases only. You choose the activities you'd like to complete to receive the maximum of \$700.

Activity Type	Activities	Amount
 Preventive care	Have an annual preventive wellness exam or well-woman exam with your doctor	\$20
	Get an annual cholesterol test ¹	\$5
	Have a colorectal cancer screening (ages 45 and older)	\$25
	Have a routine mammogram (women ages 40 to 74)	\$25
	Have an annual eye exam ²	\$20
	Get an annual flu shot	\$10

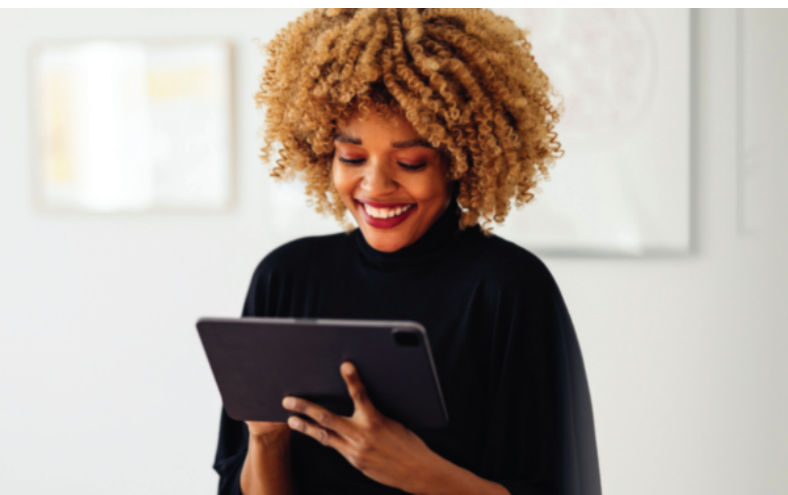


Activity Type	Activities	Amount
 Condition management programs	ConditionCare: Work one on one with your health coach and earn rewards for participating in and completing the program ³	Up to \$225 (\$90/\$135)
	Building Healthy Families: Support is available through the Sydney SM Health app wherever you are in your family planning process, such as trying to conceive or raising your toddler ⁴	\$125 (\$30/\$35/\$30/\$30)
	Well-being Coach — Weight Management: Receive one-on-one coaching by phone as you complete your goal to earn a reward ⁵	\$60
	Well-being Coach — Tobacco Cessation: Receive one-on-one coaching by phone as you complete your goal to earn a reward ⁶	\$60
 Digital & wellness activities	Log in to your Anthem account	\$5
	Connect a fitness or lifestyle device	\$5
	Complete a health assessment and receive tailored health recommendations	\$20
	Complete action plans around eating healthy, weight management, and physical activity	Up to \$20 (\$4 per action)
	Track your steps	Up to \$60 (\$2 per 50,000 steps tracked)
	Complete Well-being Coach digital daily check-ins ⁷	Up to \$20 (\$4 per milestone)
	Update your contact information	\$15

Well-being Coach can help you meet your goals

The Well-being Coach digital coaching app from Lark offers you 24/7 personalized support. Well-being Coach can help you maintain a healthy weight, quit tobacco, and improve your nutrition, exercise habits, mindfulness, and sleep. If you need extra support with weight management or quitting tobacco, talk to a certified health coach.

Access Well-being Coach in the Sydney Health app or at **anthem.com**.



Earn rewards

Here's how and when you'll earn rewards for completing the activities already mentioned.

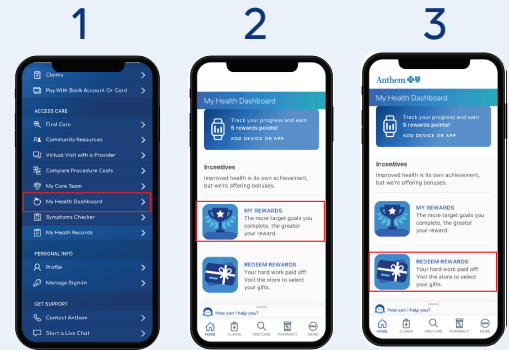
Preventive care: Simply visit your doctor for any of the screenings or appointments listed in the chart. Your rewards are added to your account after your claim is processed, which may take up to 60 days.

Condition management: Rewards are added to your account as you meet certain benchmarks or complete a program. Programs include: ConditionCare (for asthma, diabetes, and heart or lung conditions), Building Healthy Families, and Well-being Coach for weight management and tobacco cessation.

Digital and wellness activities: Log in to the Sydney Health app or **anthem.com** to complete available activities, such as taking a health assessment, participating in the Well-being Coach digital program, and tracking your steps. Rewards are added to your account as activities are completed.

Use your rewards toward Mastercard gift cards for health-related purchases only.

- 1 To view your rewards, open the Sydney Health app or go to **anthem.com**. Next, go to *My Health Dashboard*.
- 2 Select **My Rewards**.
- 3 Select **Redeem Rewards** to use your rewards credit toward a Mastercard gift card you can use for health-related purchases only. The Mastercard gift card is preprogrammed to limit purchases to health-related items like: doctor visits, deductibles, and copays. You can't use the Mastercard gift card to buy alcohol, tobacco, or firearms.



Download the Sydney Health mobile app by scanning this QR code with your phone's camera.

Do you have questions?

Log in at **anthem.com** or open the Sydney Health app. Then go to *My Health Dashboard* and select **My Rewards** to learn more. You can also call Member Services at the number on your ID card.

1 Annual cholesterol test eligibility: men 35 years and older, women 40 years and older with a full cholesterol (lipid) panel.

2 Annual eye exam reward is available if employer provides vision coverage through **Anthem**.

3 Adult members identified as moderate or high risk are eligible for ConditionCare and may receive a reward for participation in 1 of 5 ConditionCare programs and completion for 1 of 5 ConditionCare programs; (chronic obstructive pulmonary disease [COPD], coronary artery disease [CAD], asthma, diabetes, and congestive heart failure [CHF]). Rewards include: \$90 for program participation and \$135 for program completion.

4 Building Healthy Families milestone completion dates: BHF Pregnancy Screener must be completed in first trimester; at least 1 of 6 mini assessments must be completed by one day prior to delivery; postpartum assessment must be completed by 56 days after delivery. Building Healthy Families rewards include: \$30 for profile completion; \$35 for a BHF Pregnancy Screener; \$30 for completing at least 1 of 6 mini assessments; \$30 for a postpartum assessment.

5 Well-being Coach Weight Management program (telephonic) is available for members who are identified as high risk based on a body mass index (BMI) of 30 or higher.

6 Well-being Coach Tobacco Cessation program (telephonic) is available for members who are identified as high risk based on any tobacco usage.

7 Members may earn rewards for completing quarterly Well-being Coach digital milestones while logging daily check-in activities on the app. Daily check-in reward values: first check-in: \$4; next 15 check-ins during first quarter: \$4; 25 check-ins during second through fourth quarters: \$4 each quarter. Log in to Sydney Health or **anthem.com** to download the Well-being Coach digital app. Well-being Coach is provided by Lark Health.

Sydney Health is offered through an arrangement with Carelon Digital Platforms, a separate company offering mobile application services on behalf of your health plan. ©2023

We encourage you to actively participate in your rewards program. Rewards earned should be redeemed before the end of the current plan year. Unused rewards are forfeited three months after the end of your plan year. Make sure to redeem them before then.

All preventive care activities are claims-based, which means your completion is determined when a claim is processed. Medical waivers apply to claim-based activities.

Rewards eligibility applies only to subscribers and their enrolled spouse/domestic partner. Members must be active on the plan and their activity must take place during the plan year.

A subscriber and spouse/domestic partner may earn rewards when eligible activities are completed and, in some instances, are verified by an **Anthem** claim.

The reward amount you receive may be considered income to you and subject to state and federal taxes in the tax year it is paid. You should consult a tax expert with any questions regarding tax obligations.

Anthem Blue Cross and Blue Shield is the trade name of: In Colorado: Rocky Mountain Hospital and Medical Service, Inc. HMO products underwritten by HMO Colorado, Inc. Copies of Colorado network access plans are available on request from member services or can be obtained by going to anthem.com/co/networkaccess. In Connecticut: Anthem Health Plans, Inc. In Georgia: Blue Cross Blue Shield Healthcare Plan of Georgia, Inc. In Indiana: Anthem Insurance Companies, Inc. In Kentucky: Anthem Health Plans of Kentucky, Inc. In Maine: Anthem Health Plans of Maine, Inc. In Missouri (excluding 30 counties in the Kansas City area): RightCHOICE® Managed Care, Inc. (RIT), Healthy Alliance® Life Insurance Company (HALIC), and HMO Missouri, Inc. RIT and certain affiliates administer non-HMO benefits underwritten by HALIC and HMO benefits underwritten by HMO Missouri, Inc. RIT and certain affiliates only provide administrative services for self-funded plans and do not underwrite benefits. In Nevada: Rocky Mountain Hospital and Medical Service, Inc. HMO products underwritten by HMO Colorado, Inc. dba HMO Nevada. In New Hampshire: Anthem Health Plans of New Hampshire, Inc. HMO plans are administered by Anthem Health Plans of New Hampshire, Inc. and underwritten by Matthew Thornton Health Plan, Inc. In Ohio: Community Insurance Company, Inc. In Virginia: Anthem Health Plans of Virginia, Inc. trades as Anthem Blue Cross and Blue Shield in Virginia, and its service area is all of Virginia except for the City of Fairfax, the Town of Vienna, and the area east of State Route 123. In Wisconsin: Blue Cross Blue Shield of Wisconsin (BCBSWI), underwrites or administers PPO and indemnity policies and underwrites the out of network benefits in POS policies offered by CompCare Health Services Insurance Corporation (CompCare) or Wisconsin Collaborative Insurance Corporation (WCIC). CompCare underwrites or administers HMO or POS policies; WCIC underwrites or administers Well Priority HMO or POS policies. Independent licensees of the Blue Cross and Blue Shield Association. Anthem is a registered trademark of Anthem Insurance Companies, Inc.